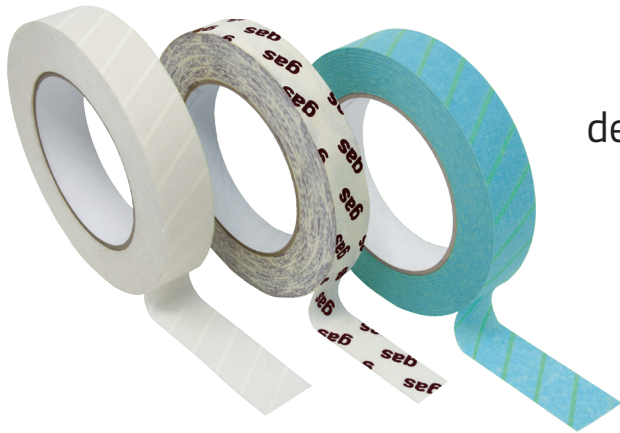


Propper Manufacturing Company

Sterilization Indicator Tape



Propper pressure sensitive sterilization tape is designed to secure sterile packages and indicate exposure to sterilization conditions.

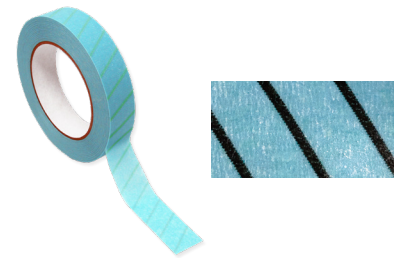
All Propper tape features lead free ink.

Steam Chex™ Autoclave Indicator Tape

For use in Steam Sterilizers

Pressure-sensitive tape featuring strong adhesive for use with disposable wraps during steam sterilization. Steam Chex™ features strong, pressure-sensitive adhesive designed to use on disposable sterilization wraps, like Propper Steri-Wrap® and Steri-Wrap® Unite™. Made without natural latex rubber. Write directly on tape or use Duo-Record® Record Keeping Labels.

Green to Dark Brown/Black indicator change after exposure to Steam



Reorder No.	Rolls/Box	Width	Length/Roll	Core Diameter
26810800	48	3/4in (18mm)	60yd (55m)	3in (7.62cm)
26810900	36	1in (25mm)	60yd (55m)	3in (7.62cm)

Strate-Line® Autoclave Indicator Tape

For use in Steam Sterilizers

Strate-Line® features strong, pressure-sensitive adhesive designed to use on disposable sterilization wraps, like Propper Steri-Wrap® and Steri-Wrap® Unite™. Made without natural latex rubber. Write directly on tape or use Duo-Record® Record Keeping Labels.

White to Dark Brown/Black indicator change after exposure to Steam



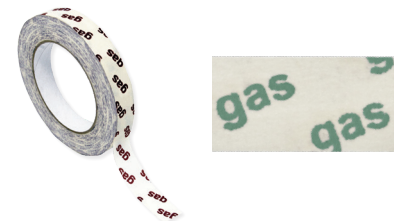
Reorder No.	Rolls/Box	Width	Length/Roll	Core Diameter
26800500	48	3/4in (18mm)	60yd (55m)	3in (7.62cm)
26800600	36	1in (25mm)	60yd (55m)	3in (7.62cm)

Gas-Chex® EO Gas Indicator Tape

For use with Ethylene Oxide Gas Sterilizers

Universal adhesive for all types of reusable and disposable wrap, paper, paper/plastic blends metal and glass. Write directly on tape or use Duo-Record® Record Keeping Labels.

Word "gas" exhibit a Red to Green color change on exposure to Ethylene Oxide Gas



Reorder No.	Rolls/Box	Width	Length/Roll	Core Diameter
26801500	48	3/4in (18mm)	60yd (55m)	3in (7.62cm)



Propper Manufacturing Company, Inc | marketing@proppermfg.com | www.proppermfg.com

36-04 Skillman Ave. Long Island City, NY, USA 11101 | Tel : +1-718-392-6650 | Fax : +1-718-482-8909